



"Where are we going?"

Roderick Diaz
Metrolink



Metrolink – Planning to Serve Communities throughout Southern California

**Western Riverside County 2018 Transportation Summit
17 January 2018**

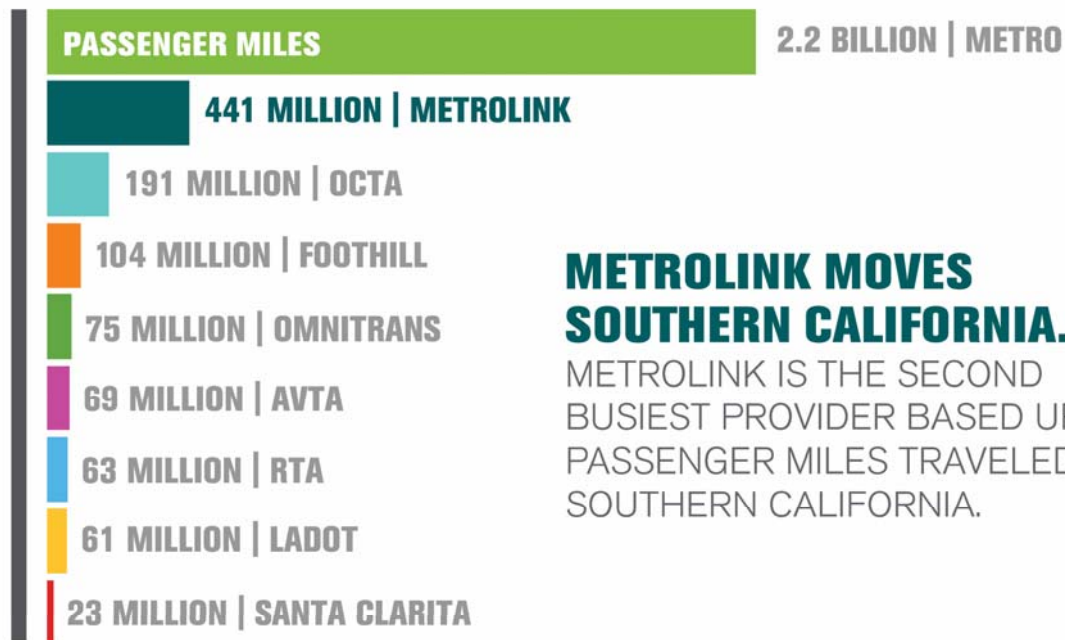
MetroLink at a Glance



- 388 mile route network
- 7 lines
- 59 stations
- 171 weekday trains
 - 40,840 average weekday boardings
- Combined population of 5 member counties: > 18 million



Metrolink at a Glance

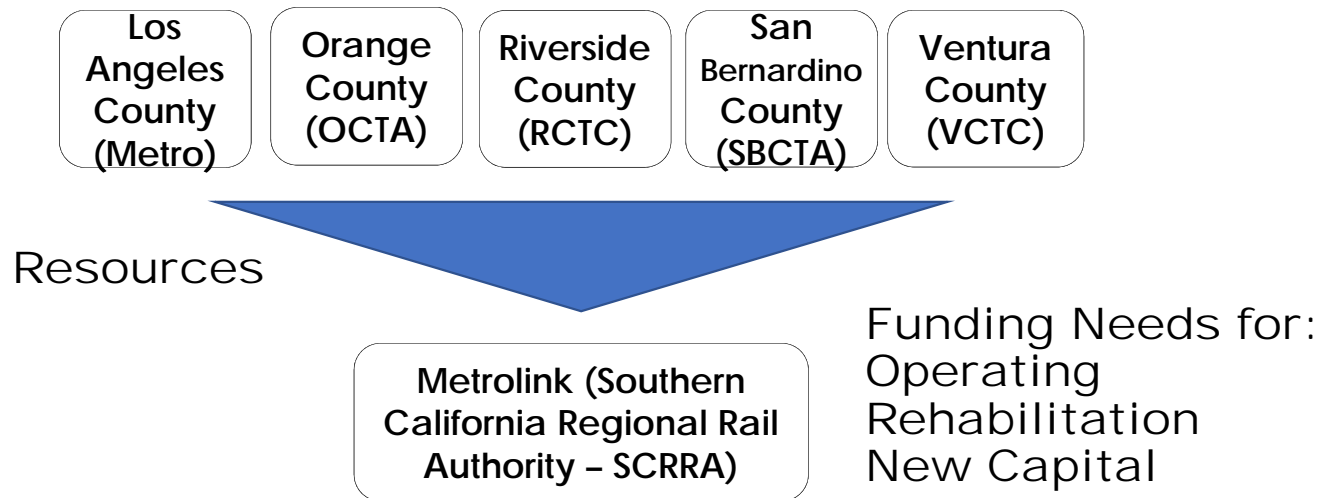


METROLINK MOVES SOUTHERN CALIFORNIA.

METROLINK IS THE SECOND BUSIEST PROVIDER BASED UPON PASSENGER MILES TRAVELED IN SOUTHERN CALIFORNIA.

Metrolink is a Joint Powers Authority (JPA) of 5 County Transportation Commissions

- Until recently, has had no direct funding sources



Strategic Plan – Priorities for Investment

1. Asset Rehabilitation

- Locomotives, Rolling Stock, TVM's, Track & Structures, Signals

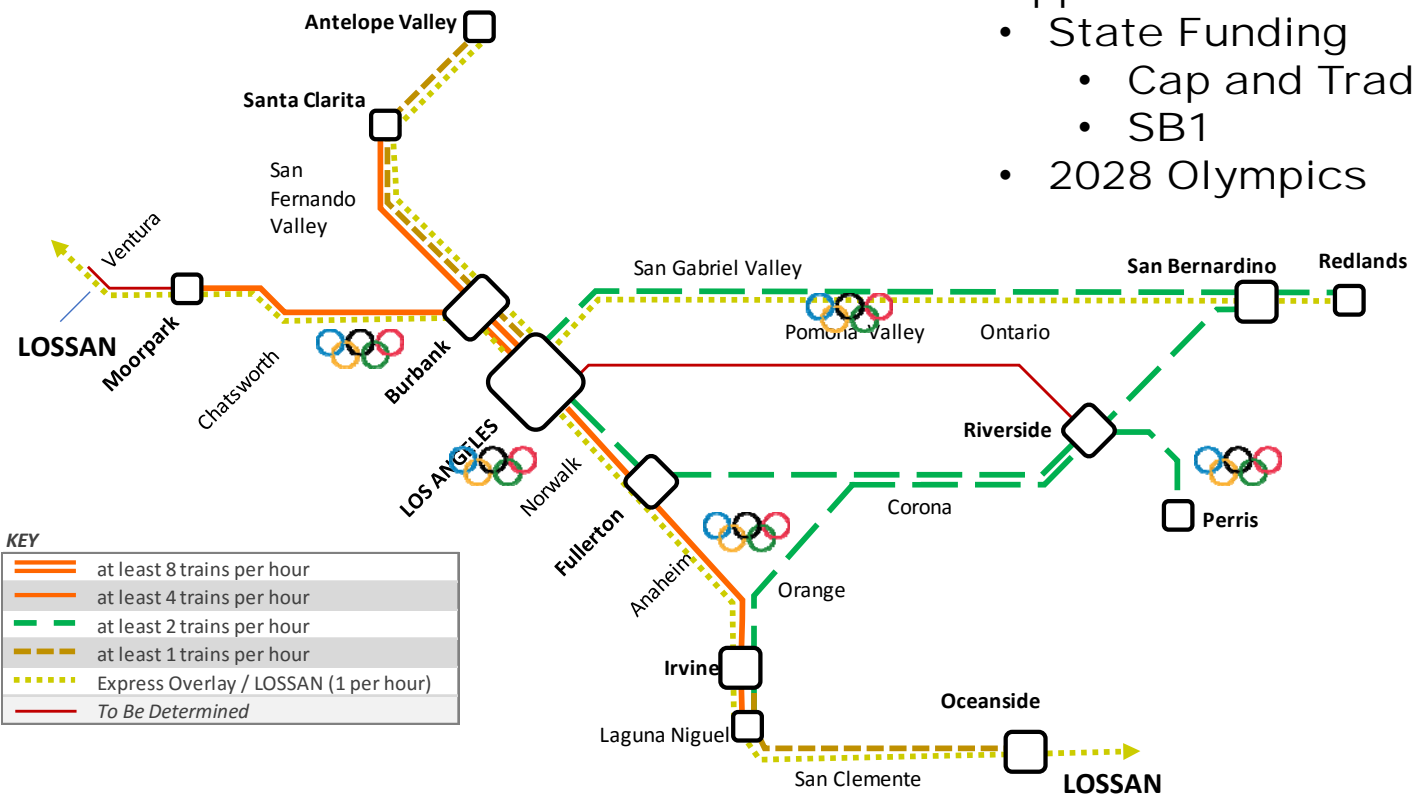
2. New Capital for Growth

- Service reliability and frequency enhancements (in partnerships with member agencies and railroads)
 - Additional main tracks
 - Sidings
 - New service delivery models (e.g., bus, new vehicle types)
- Safety enhancements (in partnerships with local agencies)
 - Grade crossing enhancements / modifications
 - Grade separations

Serving Regional Employment




Southern California Optimized Rail Expansion (SCORE)



Opportunities:

- State Funding
 - Cap and Trade
 - SB1
- 2028 Olympics

What the Vision Accomplishes

- **Trains at regular headways**
 - Timed connections between lines
 - Stronger first mile-last mile connections
- **More frequent, more reliable, more cost-effective service**
 - Minimum hourly, as frequent as 15 minutes on some segments
 - Bidirectional on all lines
 - Express overlays on some lines, including LOSSAN
- **Rail integration**
 - Between regional rail, intercity rail (LOSSAN/Amtrak) and future High Speed Rail
- **Ready for Olympics** 
 - Regional rail is only inter-county, high-speed transit serving venues

METROLINK MISSION

**TO PROVIDE SAFE, EFFICIENT, DEPENDABLE AND ON-TIME
TRANSPORTATION SERVICE THAT OFFERS OUTSTANDING
CUSTOMER EXPERIENCE AND ENHANCES QUALITY OF LIFE.**



SAFETY | PEOPLE | GROWTH | QUALITY | EFFICIENCY